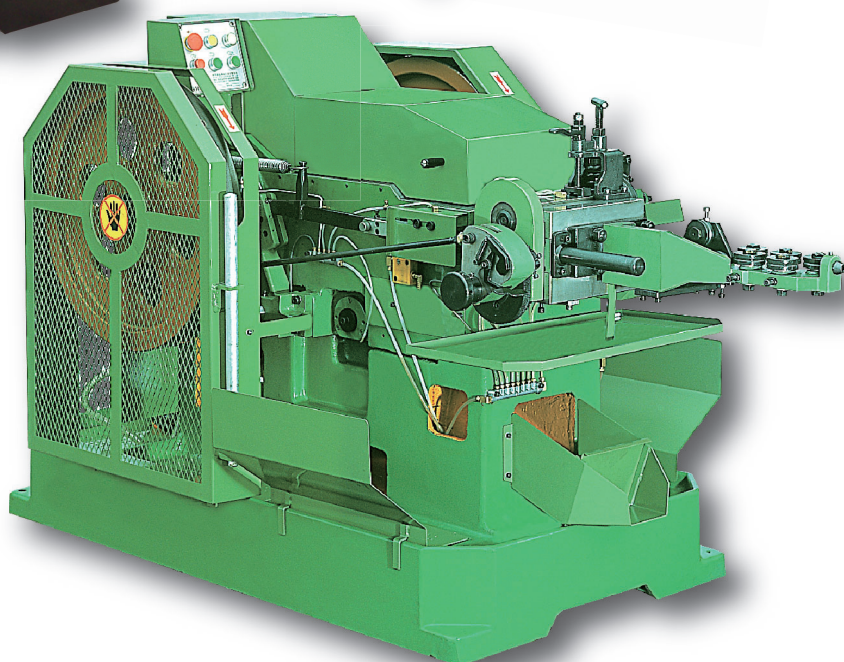
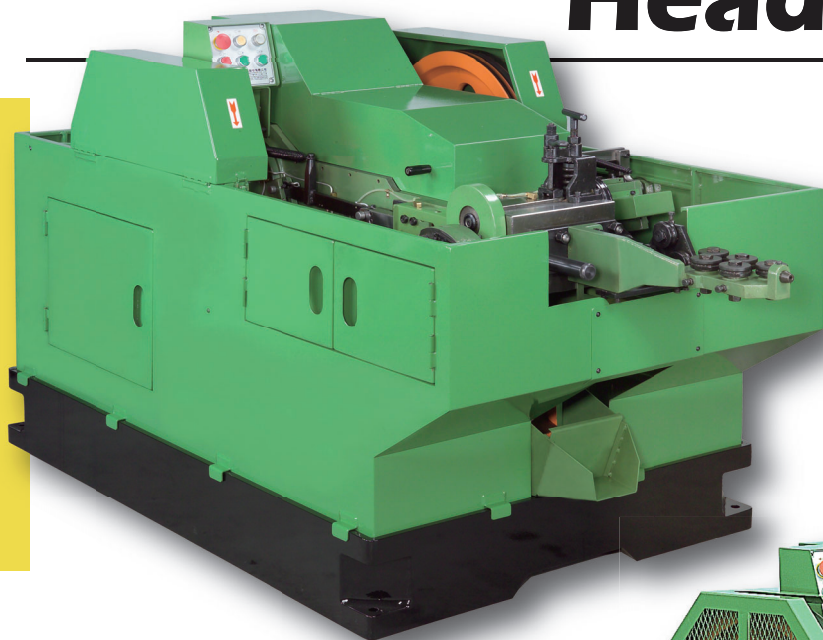


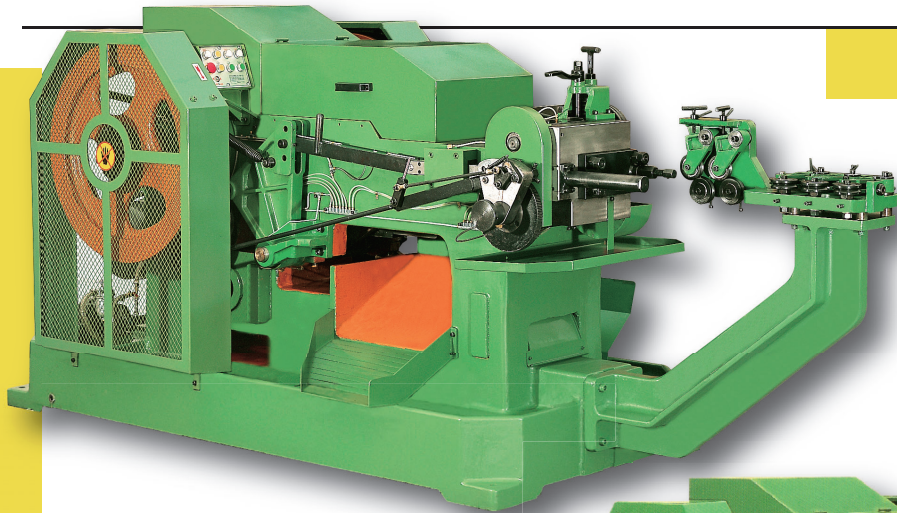
HC-5HB Heading Machine / HC-5HBA Semi Tubular Rivet Heading Machine



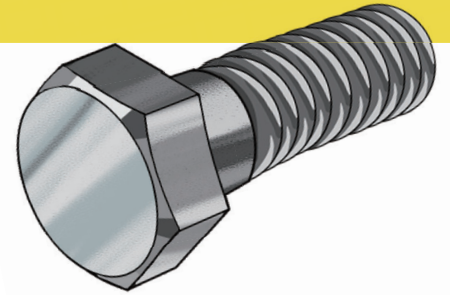
型 式 MODEL	HC-5HB	HC-5HBA
最大外徑 MAX. BLANK DIAMETER	Ø6 mm	Ø6 mm
最大長度 MAX. BLANK LENGTH	60 mm	70 mm
主模座長度 LENGTH OF THE MAIN DIE	80 mm	98 mm
主模尺寸 DIE DIAMETER	Ø34.5 x 80 mm	Ø34.5 x 75 mm
切模尺寸 CUT-OFF DIE DIAMETER	Ø19 x 36 mm	Ø19 x 36 mm
一衝模尺寸 PUNCH DIE (1ST)	9 x 32 x 65 mm	9 x 32 x 65 mm
二衝模尺寸 PUNCH DIE (2ND)	Ø31 x 70 mm	Ø31 x 80 mm
電機功率 TOTAL POWER	Ø31 x 80 mm	Ø31 x 80 mm
衝 程 STROKE	3 HP (2.25 KW)	3 HP (2.25 KW)
每分鐘產量 BLANK PER MINUTE	92 mm	92 mm
機器尺寸 MACHINE SIZE (LxWxH)	100~130 pcs	80~110 pcs
淨 重 NET WEIGHT	1900 x 1100 x 1300 mm	2200 x 1100 x 1300 mm
毛 重 GROSS WEIGHT	1500 kgs	1600 kgs
	1620 kgs	1720 kgs

HC-8H-150 Heading Machine

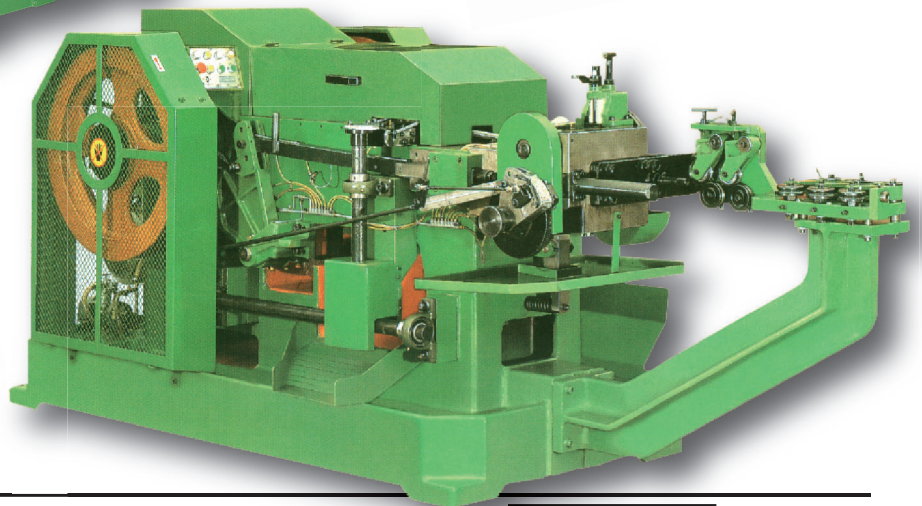
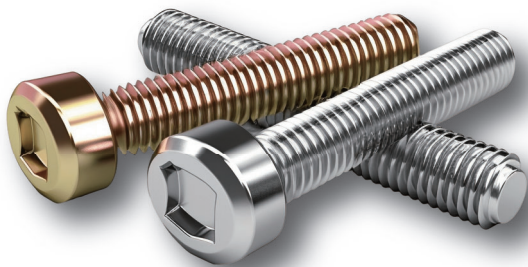
HC-8H-150A Semi Tubular Rivet Heading Machine



▲ HC-8H-150



▼ HC-8H-150A



型 式 MODEL	HC-8H-150	HC-8H-150A
最大外徑 MAX. BLANK DIAMETER	Ø10 mm	Ø10 mm
最大長度 MAX. BLANK LENGTH	150 mm	150 mm
主模座長度 LENGTH OF THE MAIN DIE	176 mm	176 mm
主模尺寸 DIE DIAMETER	Ø55 x 176 mm	Ø55 x 165 mm
切模尺寸 CUT-OFF DIE DIAMETER	Ø28 x 60 mm	Ø28 x 60 mm
	16 x 45 x 95 mm	16 x 45 x 95 mm
一衝模尺寸 PUNCH DIE (1ST)	Ø38 x 120 mm	Ø38 x 120 mm
二衝模尺寸 PUNCH DIE (2ND)	Ø38 x 120 mm	Ø38 x 120 mm
電機功率 TOTAL POWER	7.5 HP (5.625 KW)	7.5 HP (5.625 KW)
衝程 STROKE	220 mm	220 mm
每分鐘產量 BLANK PER MINUTE	60 pcs	50 pcs
機器尺寸 MACHINE SIZE (LxWxH)	3600 x 1520 x 1380 mm	3400 x 1520 x 1380 mm
淨重 NET WEIGHT	4800 kgs	5000 kgs
毛重 GROSS WEIGHT	5400 kgs	5600 kgs



鴻鋁機械股份有限公司
 HUEN CHEN MACHINERY CO., LTD.
 No. 161, Lane 1550, Feng-Chou Rd.,
 Shen-Gang Dist., Taichung City, TAIWAN
 Website: www.rivetingmachine.com
 Email: service@huenchen.com.tw
 Tel: +886-4-25615828 | Fax: +886-4-25615366

CORRECT SPECIFICATIONS
 DEPEND ON THE ACTUAL
 MODEL. ALL SPECIFICATIONS
 ARE SUBJECT TO CHANGE
 WITHOUT PRIOR NOTICE.

